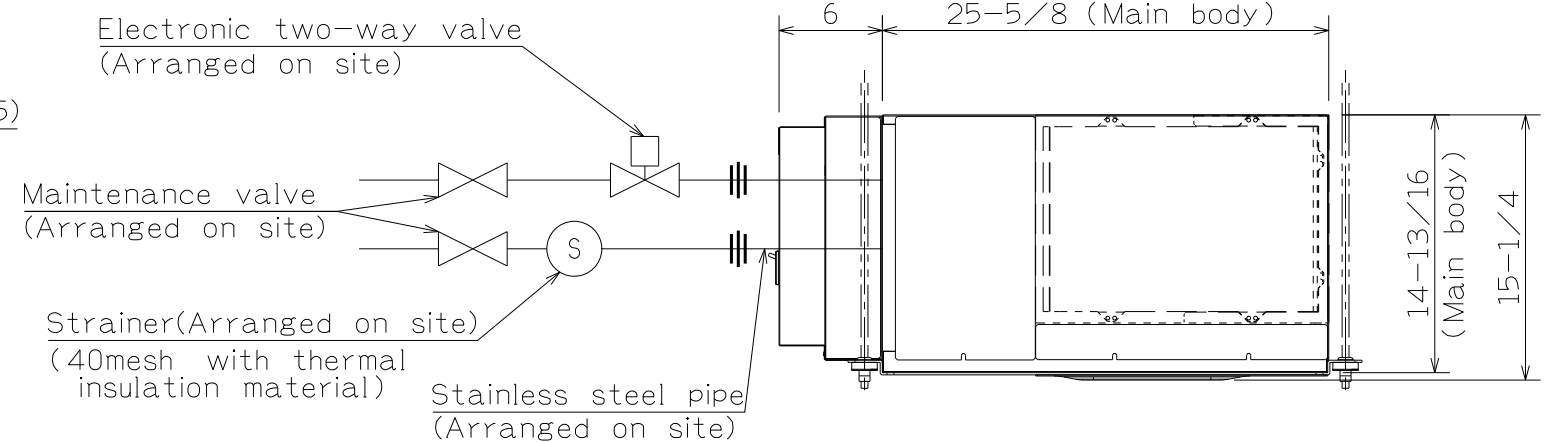
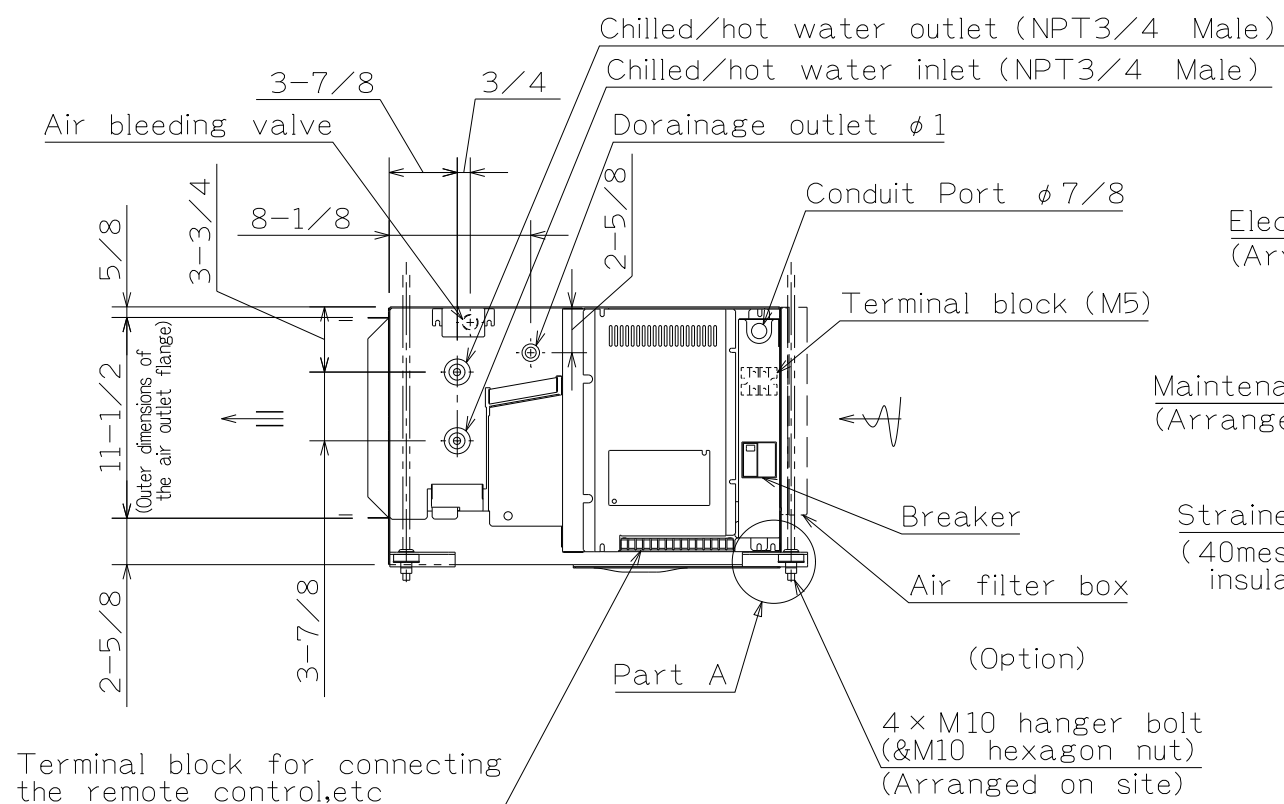
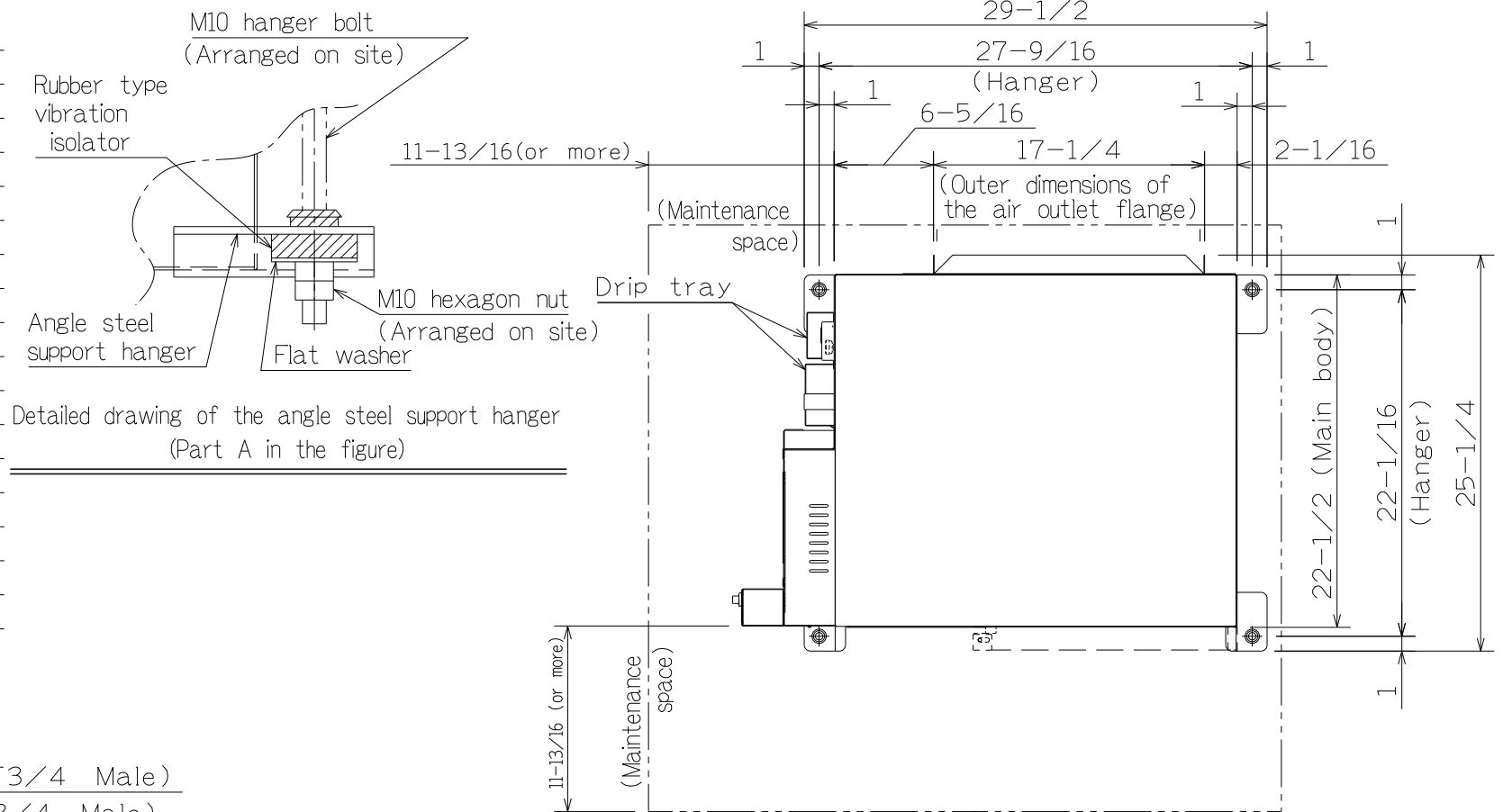



- 1:For replacement purposes,place an inspection access opening on the ceiling just below the main unit body. When an inspection access opening cannot be placed, the ceiling finish work should be carried out in a way that ensures the replacement of the main body is possible.Secure normal maintenance space in accordance with the dimensions indicated in the figure,and do not place any obstacles in the immediate surroundings or below the unit.
- 2:Because the electronic three-way valve is built into the main body,clean the inside of the chilled/hot water pipe well by flashing water before use.  
Because the entry of dust,etc. inside the main body may prevent the electric three-way valve from working normally,it is recommended that an accompanying strainer (Arranged on site). should be placed at the chilled/hot water inlet of each main body.  
In addition,stainless piping(arranged on site)is required from chilled/hot water inlet to the strainer for prevention of red rust.
- 3:Ensure that chilled water should be flowing after turning on the electricity for the unit.  
If chilled water has been flowing for a long time before turning on the electricity, this may cause dew condensation or water leakage.
- 4:Ensure that the inclination of the drainage pipes is 1/100 or greater.
- 5:Be sure to apply thermal insulation to the chilled/hot water pipes and drainage pipe.



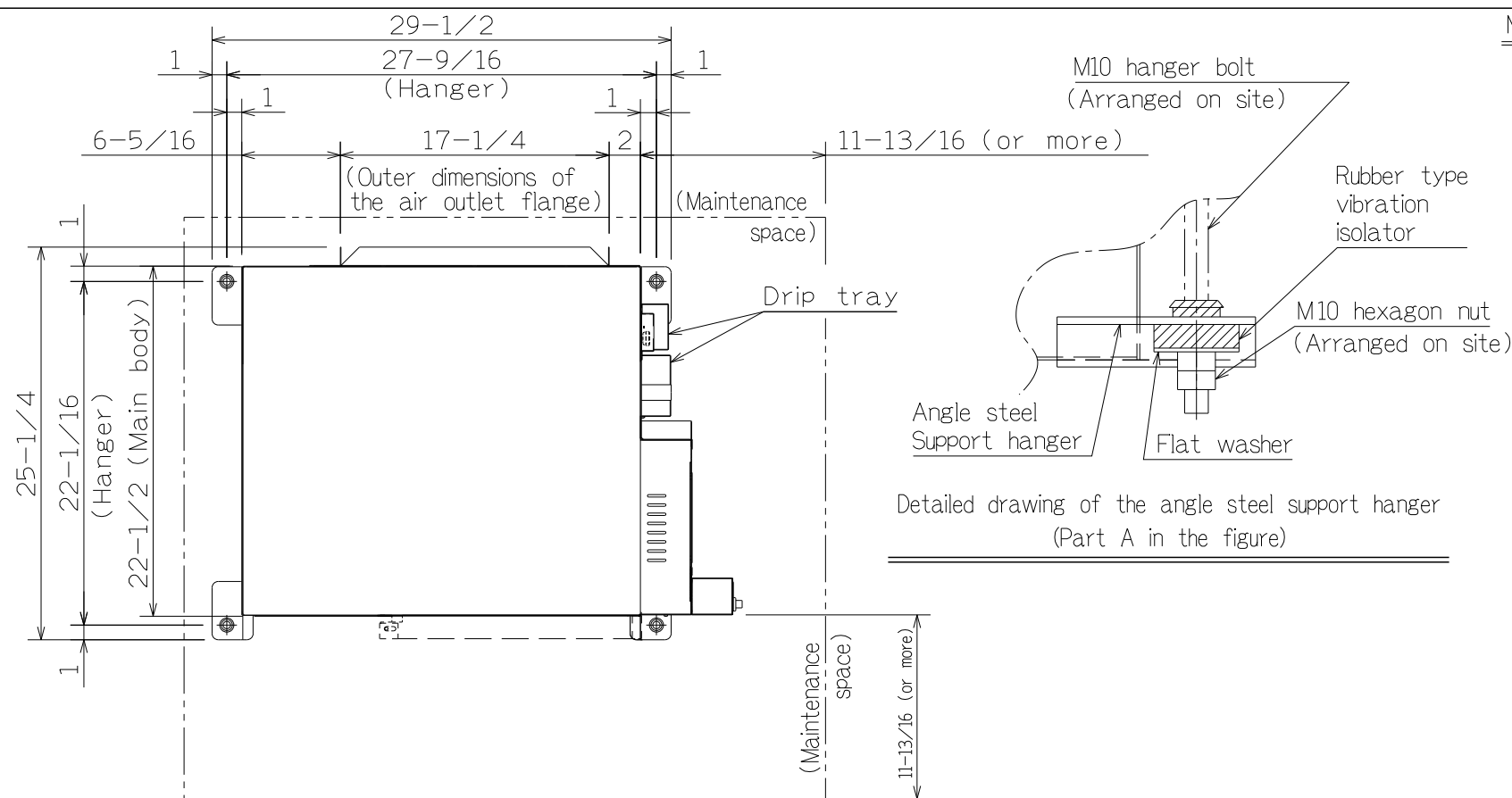
ORDER NO. _____					
PROJECT NAME _____					
INQUIRY FROM _____					FBP37BA K Air Duct-connected, Side surface suction NAME Pipe tapping on the left side (L type) Main body dimensional drawing
DESIGNED BY	CHECKED BY	APPROVED BY	DATE	SCALE	DRAWING NUMBER 43-07-170W
				Not to scale	

APPROVED BY

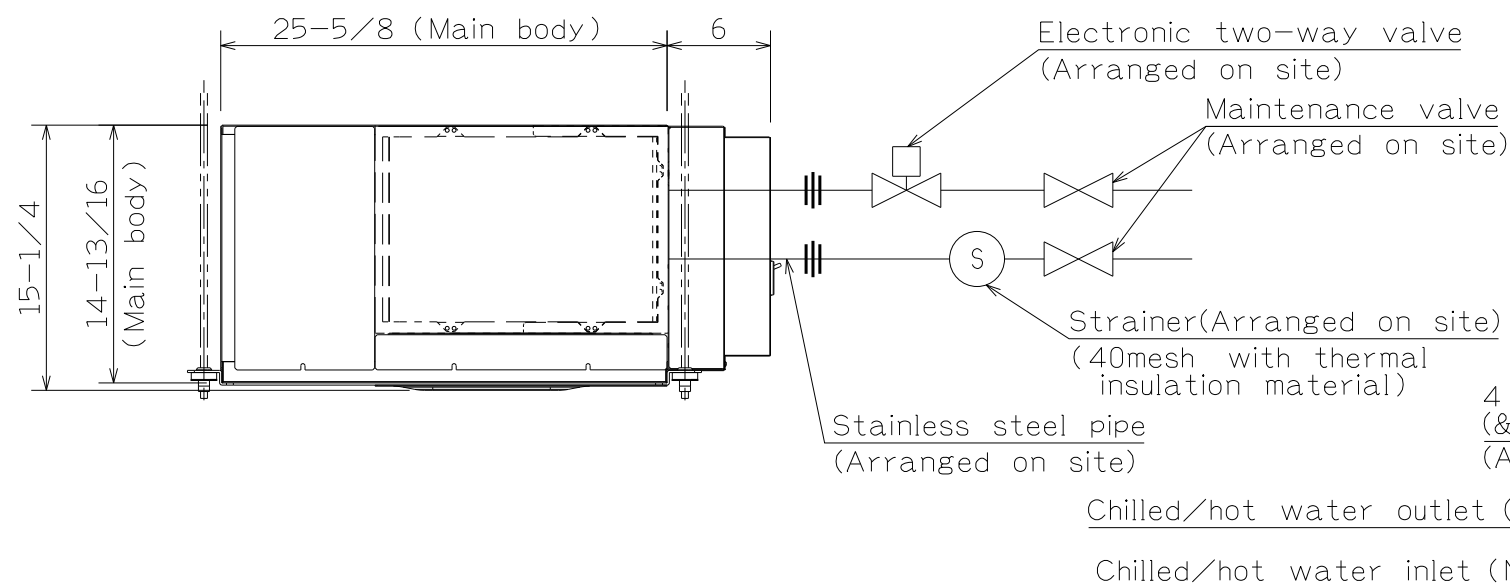
CHECKED BY

DESIGNED BY nagayama 20170323

DRAWN BY

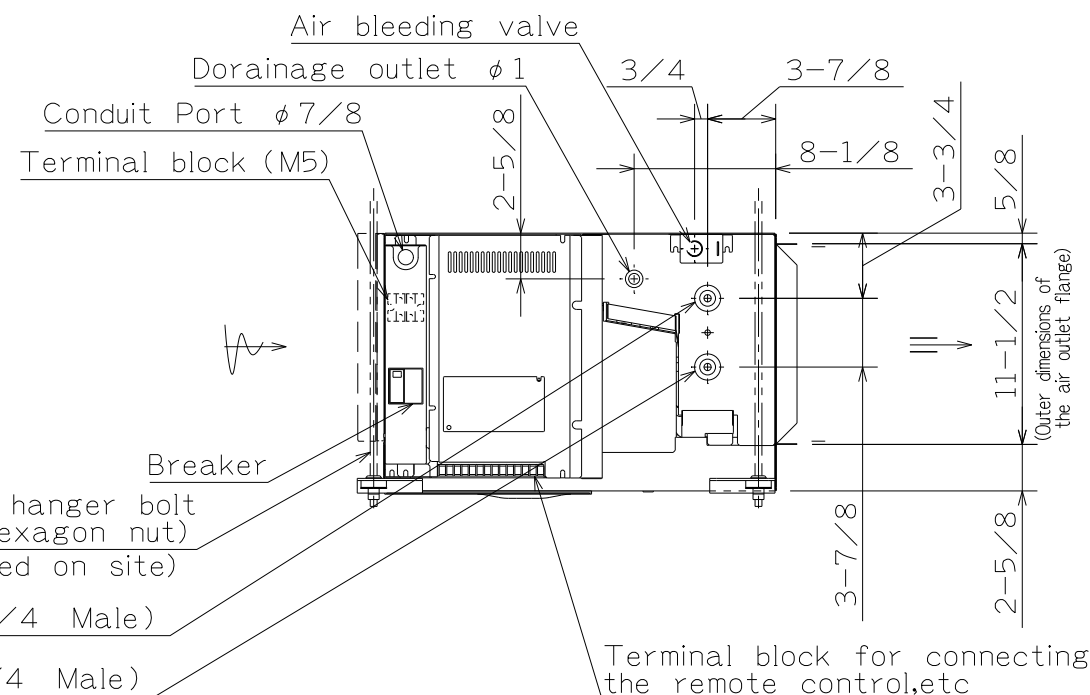


Detailed drawing of the angle steel support hanger  
(Part A in the figure)



#### Note

- 1:For replacement purposes, place an inspection access opening on the ceiling just below the main unit body. When an inspection access opening cannot be placed, the ceiling finish work should be carried out in a way that ensures the replacement of the main body is possible. Secure normal maintenance space in accordance with the dimensions indicated in the figure, and do not place any obstacles in the immediate surroundings or below the unit.
- 2:Because the electronic three-way valve is built into the main body, clean the inside of the chilled/hot water pipe well by flashing water before use. Because the entry of dust, etc. inside the main body may prevent the electric three-way valve from working normally, it is recommended that an accompanying strainer (Arranged on site) should be placed at the chilled/hot water inlet of each main body. In addition, stainless piping (arranged on site) is required from chilled/hot water inlet to the strainer for prevention of red rust.
- 3:Ensure that chilled water should be flowing after turning on the electricity for the unit. If chilled water has been flowing for a long time before turning on the electricity, this may cause dew condensation or water leakage.
- 4:Ensure that the inclination of the drainage pipes is 1/100 or greater.
- 5:Be sure to apply thermal insulation to the chilled/hot water pipes and drainage pipe.



ORDER NO. _____					<div>PMAC</div>
PROJECT NAME _____					
INQUIRY FROM _____					
DESIGNED BY	CHECKED BY	APPROVED BY	DATE	SCALE	NAME
				Not to scale	FBP37BA K Air Duct-connected, Side surface suction Pipe tapping on the right side (R type) Main body dimensional drawing
					DRAWING NUMBER 43-07-210W