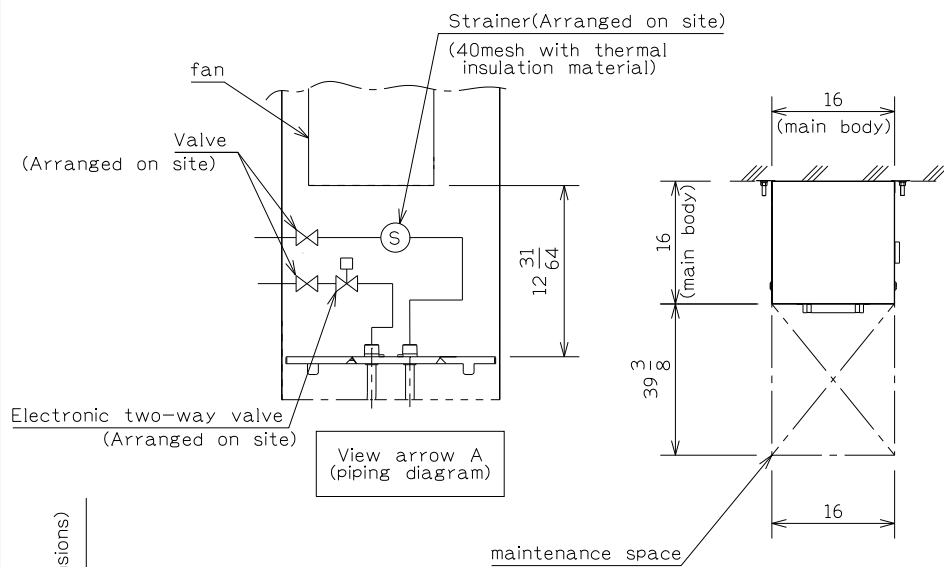


APPROVED.

CHECKED.

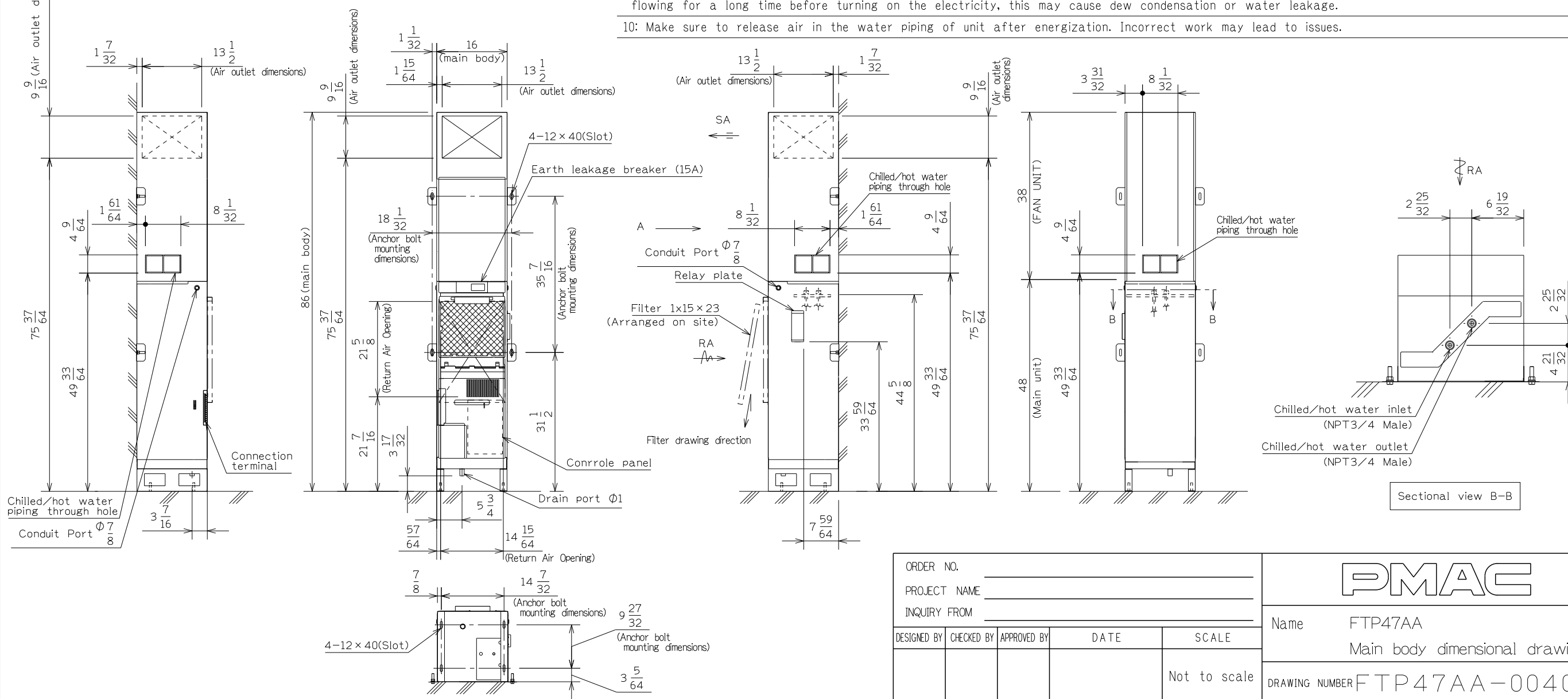
DESIGNED: Fukuoka 20181213

DRAWN.



NOTE

- 1:For installation, securely fix the anchor bolt and double nuts M10 to the back side and floor.(eight sets to be prepared by the installer at the site)
- 2:Fix the main unit within the dimensions shown in the main unit fixation figure.
- 3:The installer is responsible for connecting drain piping for the main unit and power cable/instrumentation cable as well as installing components that are separately delivered.Please see the installation figure.
- 4:Ensure that the inclination of the drainage pipes is 1/100 or greater.Attach the drainage hose of the accessory so that it does not deform.
- 5:Connect chilled/hot water pipes in the correct orientation. If incorrectly connected, the machine cannot operate at the normal performance level.
- 6:Be sure to apply thermal insulation to the chilled/hot water pipes and drainage pipe.
- 7:Mount the strainer and the valve to the chilled/hot water inlet pipe. Mount the electric two-way valve and the valve to the chilled/hot water outlet pipe.
- 8:Because the electric three-way valve is built into the main body,clean the inside of the chilled/hot water pipe well by flashing water before use.Because the entry of dust,etc. inside the main body may prevent the electric three-way valve from working normally,it is recommended that a strainer (Arranged on site) should be placed at the chilled/hot water inlet of each main body. When connecting the piping, please use a fitting which doesn't corrode with the water inlet / outlet(brass) of the main unit.
- 9:Ensure that chilled water should be flowing after turning on the electricity for the unit. If chilled water has been flowing for a long time before turning on the electricity, this may cause dew condensation or water leakage.
- 10: Make sure to release air in the water piping of unit after energization. Incorrect work may lead to issues.



ORDER NO. _____				
PROJECT NAME _____				
INQUIRY FROM _____				
DESIGNED BY	CHECKED BY	APPROVED BY	DATE	SCALE
				Not to scale

<b>PMAC</b>	
Name	FTP47AA
	Main body dimensional drawing
DRAWING NUMBER	FTP47AA-0040